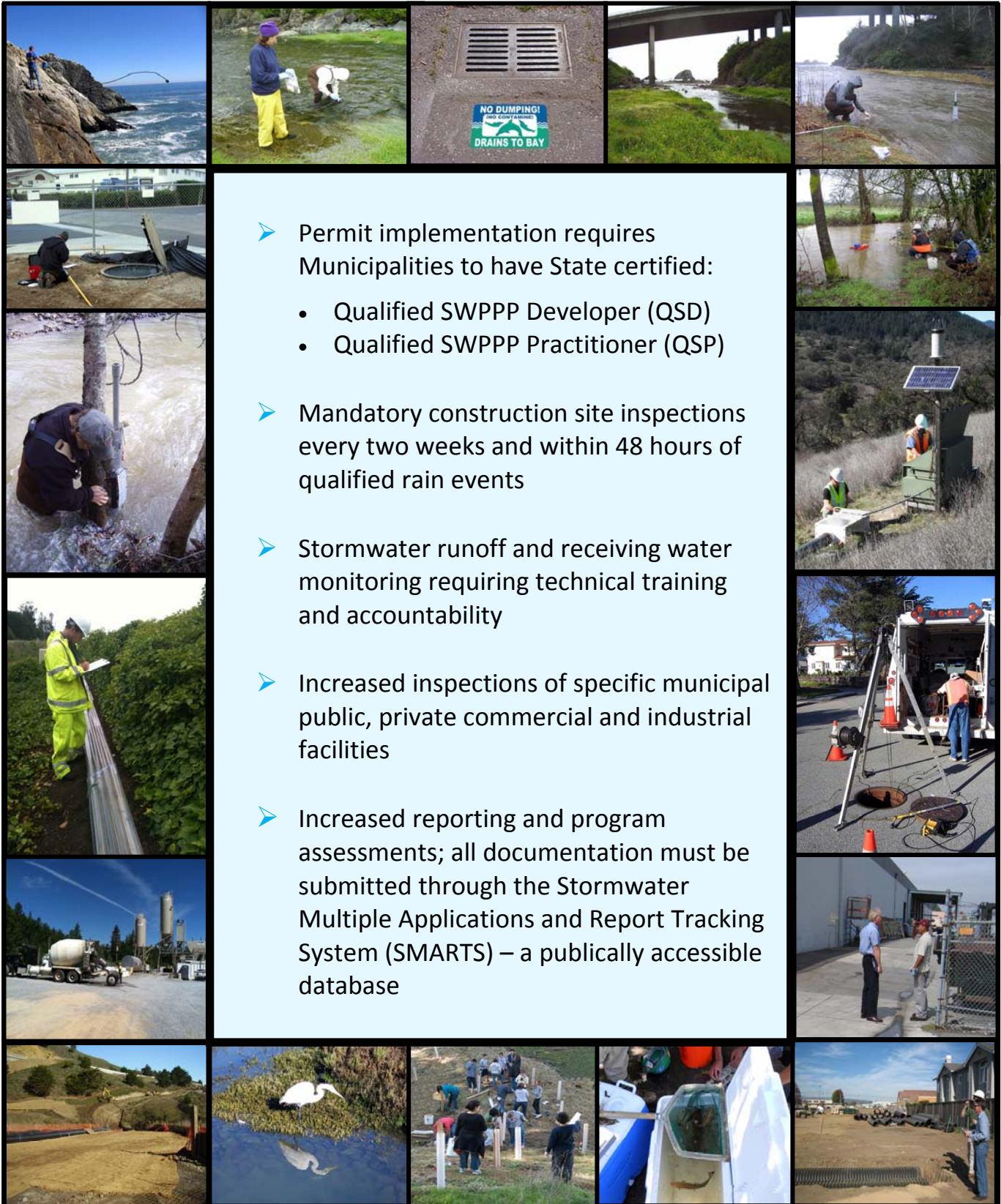


New Municipal Phase 2 Permit Requirements



- Permit implementation requires Municipalities to have State certified:
 - Qualified SWPPP Developer (QSD)
 - Qualified SWPPP Practitioner (QSP)
- Mandatory construction site inspections every two weeks and within 48 hours of qualified rain events
- Stormwater runoff and receiving water monitoring requiring technical training and accountability
- Increased inspections of specific municipal public, private commercial and industrial facilities
- Increased reporting and program assessments; all documentation must be submitted through the Stormwater Multiple Applications and Report Tracking System (SMARTS) – a publically accessible database

ADH Municipal Phase 2 General Permit Solutions

- Comprehensive municipal stormwater program development and implementation experience
- QSDs and QSPs for project coordination and implementation, inspections and BMP performance evaluations
- On-site and classroom-based stormwater program compliance training
- Rain event and periodic construction site compliance inspections
- Inspections for construction, industrial and commercial sites, and municipal facilities
- Stormwater runoff sampling
- Receiving water sampling program development and implementation
- Submittal of Project Reporting Documents (PRDs) and data submittal for Legally Responsible Party (LRP) certification through the SMARTS system

Full Service Compliance Assistance with ADH